



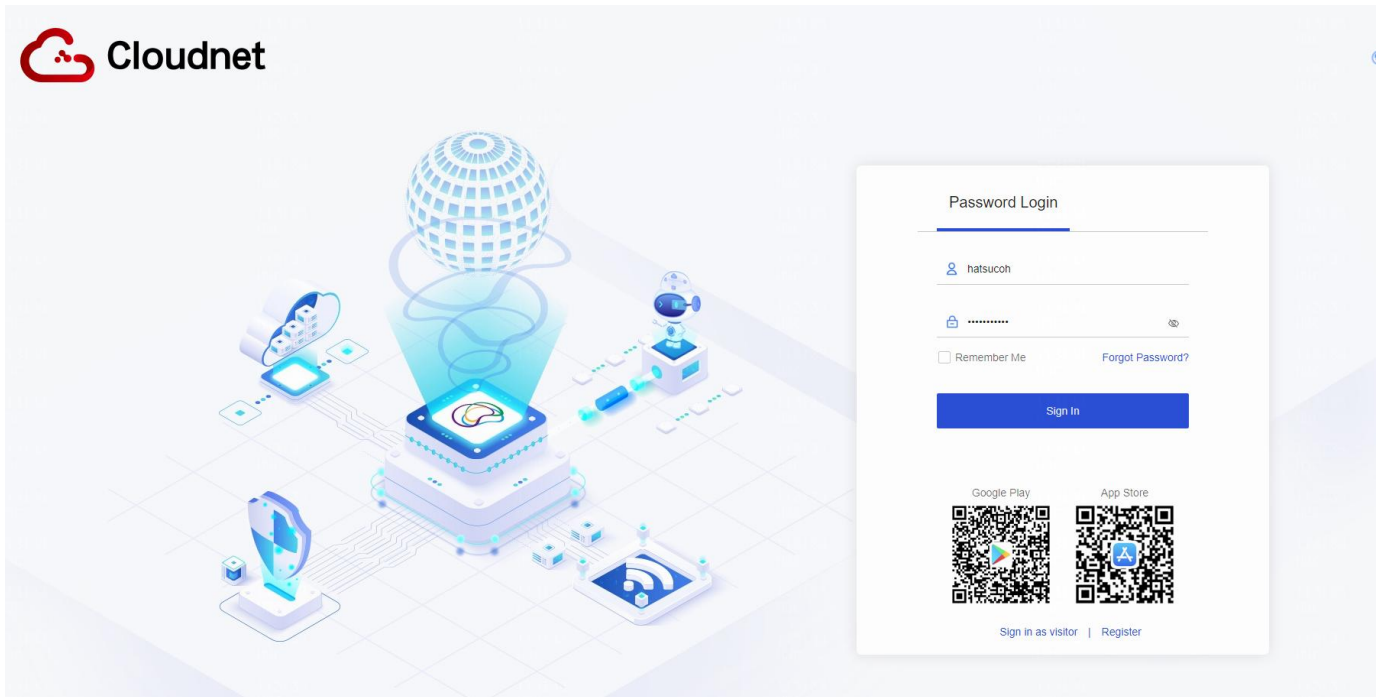
# H3C Cloudnet

## Product overview

H3C Cloudnet is a H3C-proprietary comprehensive operation management and maintenance platform. Based on H3C unified O&M cloud platform, it provides a light-weight and multi-service platform to manage network and a powerful O&M service for small business. It uses Kubernetes for containerized applications and a fully distributed architecture to provide management of networks, terminals, users, and service enabling features. With management and monitoring of multiple network services, the platform breaks the data barriers between services caused by isolated and vertical service deployment.

H3C Cloudnet supports the delivery model of public clouds and provides customers with comprehensive network solutions to meet the needs of customers from different industries and operators.

Cloudnet currently provides services globally, with its market scale continuing to grow rapidly. It has successively deployed cloud service nodes in China, Singapore, Spain and Brazil , which provide continuous and reliable cloud management services to users in China, Asia-Africa-Latin America, and Europe respectively. Cloudnet is hosted in Microsoft Azure , and provide 99.99% high availability, and it can compatible with major market browsers (Edge, Firefox, or Chrome).

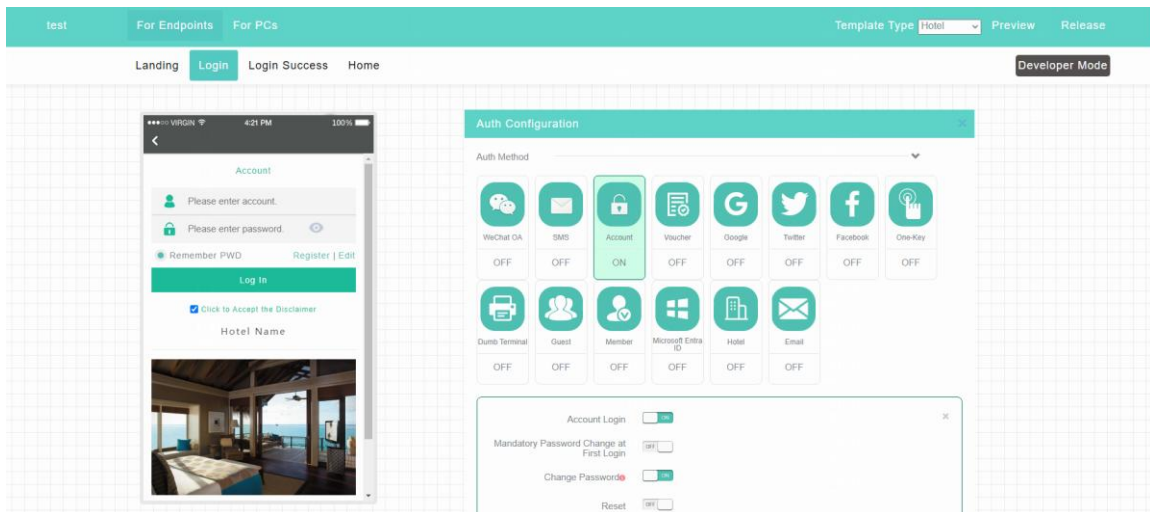


H3C Cloudnet

## Features and highlights

### Cloud authentication

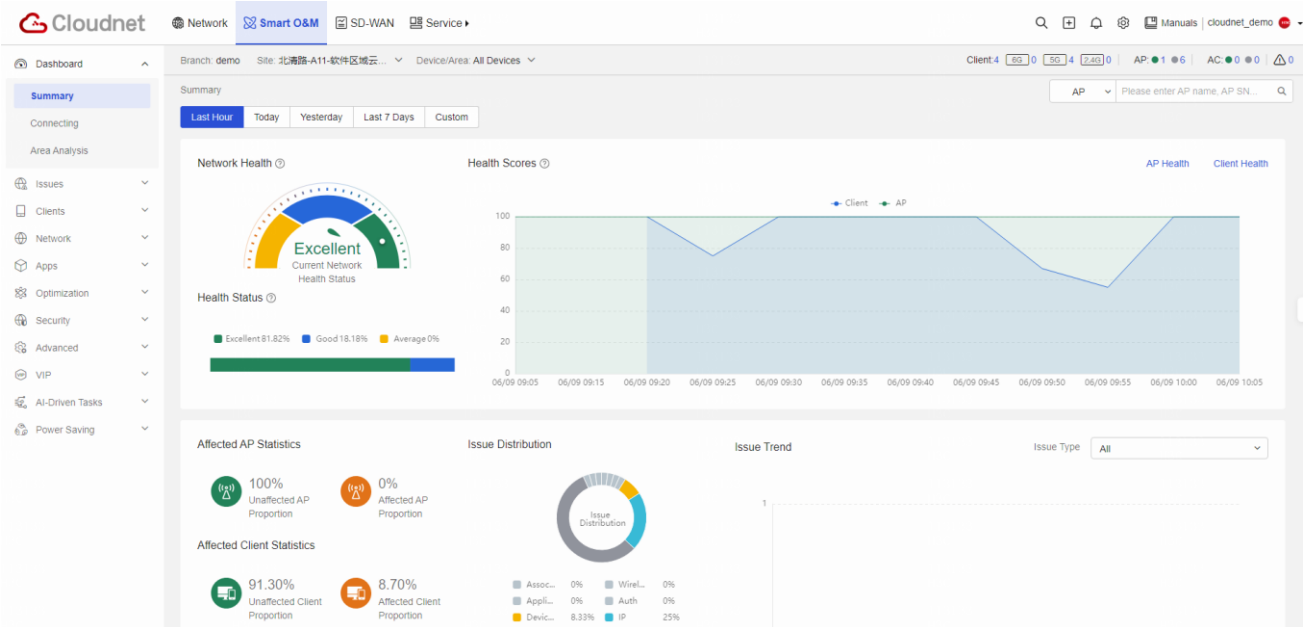
Support Facebook authentication, one-click authentication, fixed account authentication, Portal authentication, WeChat authentication, visitor QR code authentication, dumb terminal authentication, etc. Support the ability to customize the authentication page, full graphical configuration, what you see is what you get; support drag and drop to adjust the layout, support text, pictures, carousel diagrams, videos, authentication boxes, buttons, and other parts of the customization. Support developer mode, support users to develop authentication pages by themselves; support separate allocation of permissions, and authorize operators. Customization and pages bring the ultimate experience to user operations.



Various authentication methods for users to choose

## Network O&M

Support one-key inspection, one-key network optimization and other functions, enabling users to complete network detection and optimization with simple click operations. The intelligent operation and maintenance of Cloudnet makes the network resource information visible, automatically senses the hidden dangers of the entire network, and automatically eliminates the entire network failure. Tracking and automatically always optimizing the network, so that the network is always in the best state, providing users with an excellent online experience.



Smart O&M escorts networks

# AI O&M

The network intelligent diagnosis function supports in-depth analysis of 100+ situations, offering 100+ solutions for these network issues, providing comprehensive and thorough analysis of network problems. Based on all scenarios, gather micro-level issues, analyze patterns, and deeply reason out the root causes.

Network Diagnosis AP

**Clue-based network reasoning - Enjoy free connections with a minimalist approach.** On

Based on the existing system issues and alarm data, this function provides you with a global perspective on network operation status reasoning and give handling strategies. [View Usage Guidelines](#)

**8**  
Total in the Past 7 Days

**14**  
Total Cumulative Conclusions

**0**  
Total Devices in Optimization

**6**  
Total Events Processed

Current Reasoning Conclusions [View Ignored Detection Items](#) [View Historical Reasoning Conclusions](#)

Process	Network Reasoning Conclusions	Handling Suggestions	D	Reasonin...	Operate
Ignore   Manually Process	A large number of weak signal endpoints have accessed APs	Please check the installation location of the APs or add more APs to provide better coverage and user exper...	In	<a href="#">View Detail</a>	<a href="#">Down Arrow</a>
Ignore   Re-enable AP	AP service status is abnormal	You can try restarting the APs. If the problem still exists after the restart, please contact the after-sales pers...	Pr	<a href="#">View Detail</a>	<a href="#">Down Arrow</a>
Ignore   Manually Process	AP region wireless interference is high and long-lasting, res...	It is recommended to optimize the regional channel to avoid interference. If the problem persists after optimi...	TI	<a href="#">View Detail</a>	<a href="#">Down Arrow</a>
Ignore   Manually Process	A physical line failure exists on a device in the network	1. Identify whether the network cable is too long or has aged; If yes, replace it promptly 2. Verify that the ph...	TI	<a href="#">View Detail</a>	<a href="#">Down Arrow</a>
Ignore   Manually Process	The device is operating abnormally	1. Promptly identify whether the network is impacted by broadcast, multicast, or other abnormal packets 2. If...	TI	<a href="#">View Detail</a>	<a href="#">Down Arrow</a>
Ignore   Manually Process	In the network, the subconnection between the device and ...	1. Identify whether the egress network is stable 2. If the issue persists, contact Technical Support	O	<a href="#">View Detail</a>	<a href="#">Down Arrow</a>
Ignore   Manually Process	No application session is created in the network	1. Identify whether the configuration is correct 2. If the configuration is correct, verify that the users accessin...	TI	<a href="#">View Detail</a>	<a href="#">Down Arrow</a>
Ignore   Manually Process	Multiple cloud-managed AP versions exist in the site	As a best practice, contact Technical Support to synchronize versions and try to maintain version consistency	Fl	<a href="#">View Detail</a>	<a href="#">Down Arrow</a>

**AI Root Cause** ✕

Low Selected...

Weak Signal

**Problem Overview**

The endpoint experienced multiple low selected rate issues when connecting to mock\_ssid3 (AP name: mock\_ap5, radio ID: 1) during the period from 2025-06-04 23:45:00 to 2025-06-05 00:10:00

**Possible Root Causes**

Weak Signal

**99.91%**

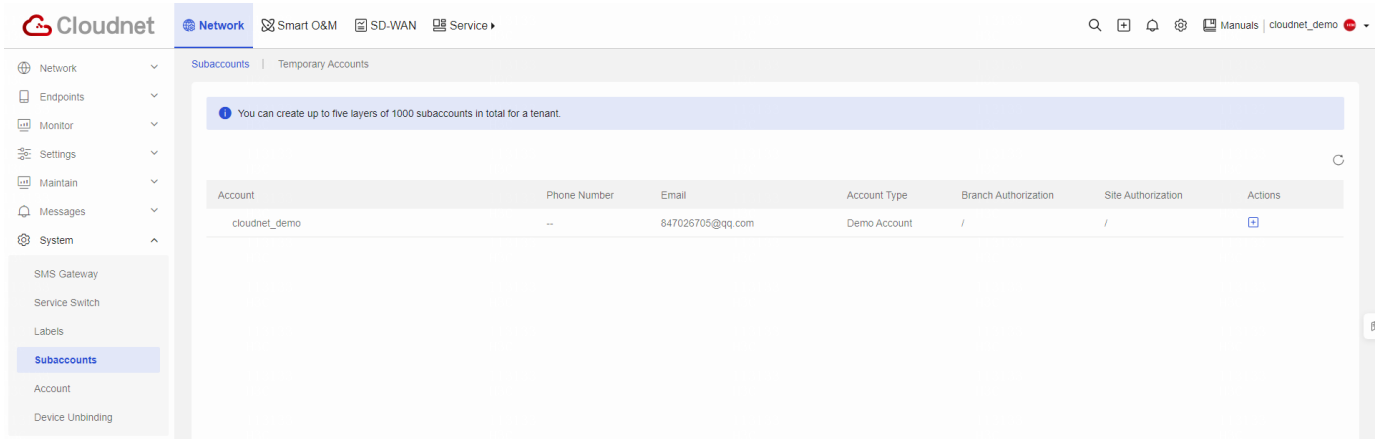
**Solution**

1. Identify whether the actual user has changed the endpoint location
2. Identify whether the network card antenna is loose
3. Use the client to come online again, and continue to monitor the usage status.
4. Restart the endpoint and continue to monitor its usage state

**Event Sequence**

## Role-based access control

With role-based access control (RBAC), you can perform fine-grained access management of the Cloudnet platform. A user can create subaccounts with different user roles and authorize them with different sites or branches to separate rights and achieve hierarchical management.



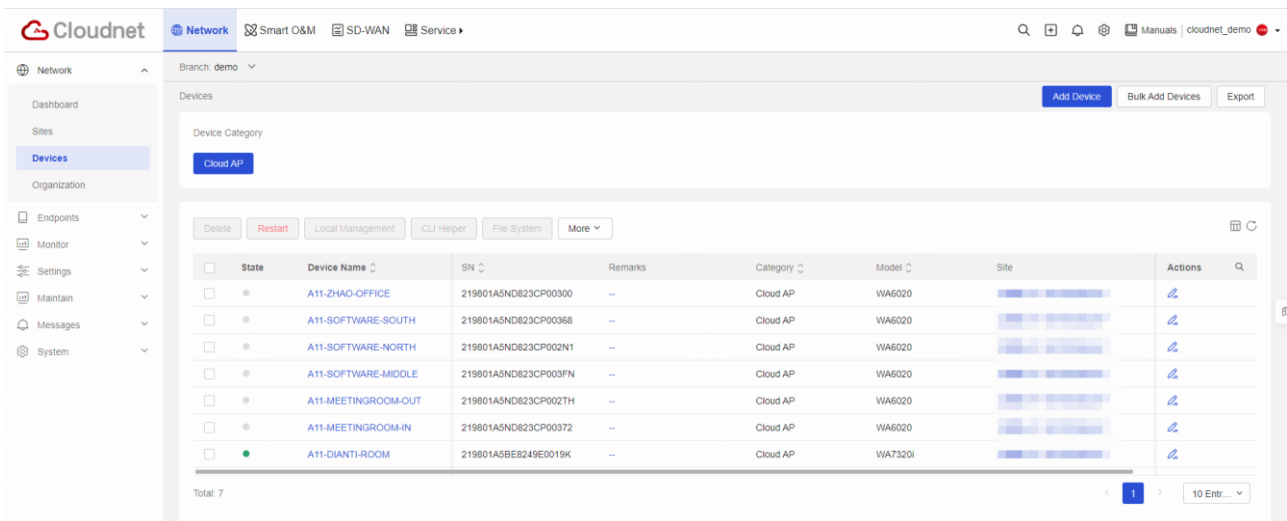
Subaccount authority

## Terminal management

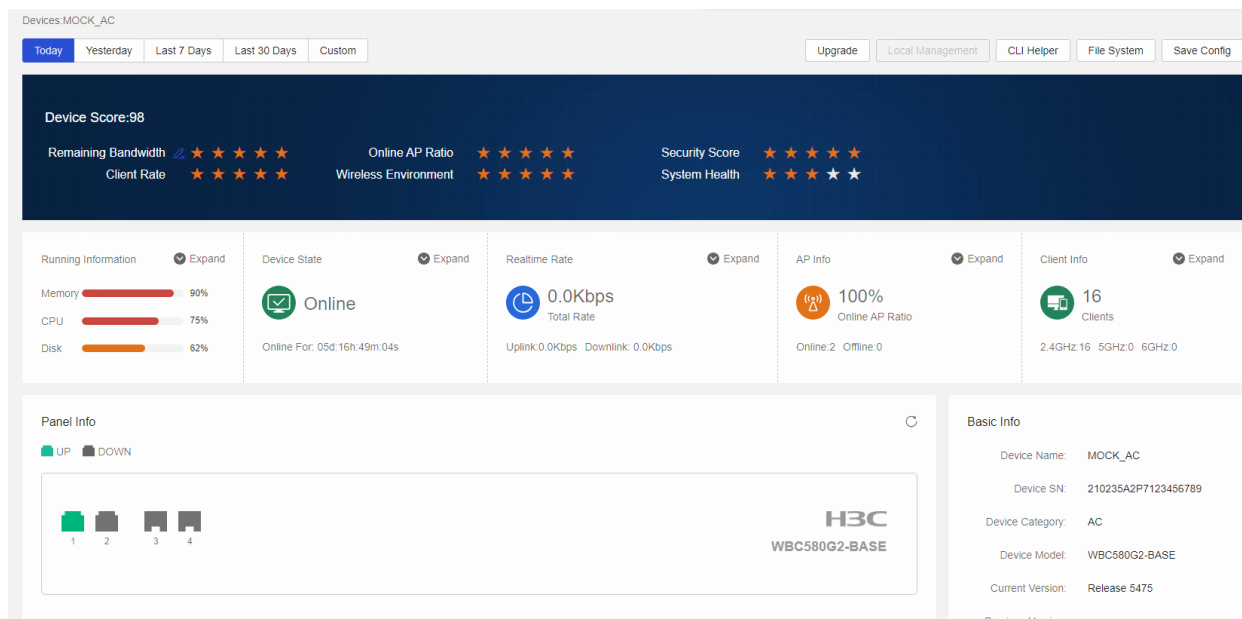
The platform provides unified management of various terminals to reduce management costs.

## Full network management

The Cloudnet platform supports full-standard network connection and management, wired and wireless integration, supports unified monitoring, configuration, maintenance, and operation of switches, routers, wireless ACs, APs, and security devices, and provides unified cloud management.



Device management



Device monitoring

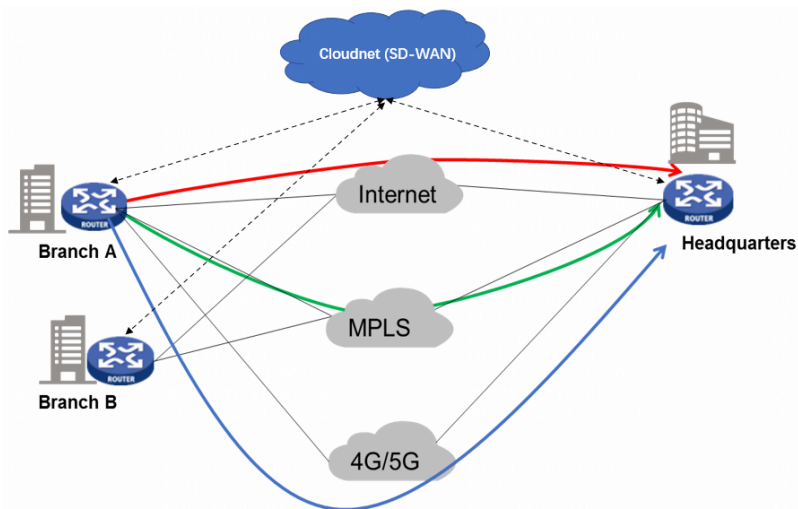
## Automated WAN service deployment

The SD-WAN solution supports automated deployment of VPN services, LAN services, and QoS services across the whole network. You can define applications based on the IP 5-tuple, DSCP, VPN information, and application-layer packet signatures. You can define policies based on route selection, bandwidth, and service quality requirements and the time range.

- VPN service deployment—After a device comes online, the SD-WAN automatically deploys IPsec tunnel settings if the WAN interface of the device connects to the Internet. Meanwhile, the SD-WAN creates a SD-WAN tunnel for each WAN link to provide consistent traffic engineering, irrespective of their link types.
- LAN service deployment—The SD-WAN automatically deploys LAN service settings to devices at the branch sites, eliminating the need to configure the devices one by one manually. The CPE device can be deployed as a Layer 3 gateway at the branch site, or it can connect to the Layer 3 network in the branch through a routing protocol.
- Agile QoS service deployment—From the application group configuration page, you can configure the maximum bandwidth to implement application group-based rate limiting on LAN interfaces of devices. If the bandwidth rented from a service provider is smaller than that of the interface, you can configure a rate limit for the WAN interface to prevent excess traffic from being dropped by the service provider. If traffic flows with multiple priorities exist in the network and congestions occur, you can configure an assurance profile to ensure low latency for high priority traffic by assigning a high priority queue and more bandwidth to it. You can make dynamic bandwidth and rate limit adjustments based on real-time network conditions to protect core network applications. For example, in special or critical periods, you can block or rate-limit illegitimate traffic or low-priority traffic to ensure the bandwidth requirements of high-priority services.

## Intelligent and flexible traffic engineering policies

The SD-WAN solution supports various types of traffic engineering policies.



- Traffic engineering based on bandwidth usage, link coloring, and other factors—Assume that two services run on the same link under normal circumstances. When the bandwidth usage of the link reaches the threshold, the device automatically steers service traffic to the other link according to the traffic engineering settings deployed by SD-WAN to ensure user experience.
- Traffic engineering based on latency, jitter, packet loss rate, and other factors—Assume that two services run on the same link under normal circumstances. When the latency on the link reaches the threshold, the device automatically steers service traffic to the other link according to the traffic engineering settings deployed by SD-WAN to ensure user experience.
- Time range-based traffic engineering—You can configure SD-WAN to enforce different traffic engineering policies during different time ranges to ensure guaranteed delivery of high-priority services in the desired time ranges.

## WAN acceleration

The SD-WAN solution supports Web caching and Forward Error Correction (FEC) for acceleration and optimization of applications on the WAN.

- Web caching: When a user first accesses a Web page through HTTP or HTTPS, the device caches the Web page content locally. The next time the same content is requested (within the aging time), the device directly serves the content from the cache. This helps speed up the application load time by at least 400% and improve Webpage access efficiency by 100%.
- FEC: FEC is a technique used for controlling errors in data transmission over unreliable or noisy communication channels. The sender automatically calculates and adjusts the ratio of redundant packets according to the real-time packet loss rate obtained through end-to-end link quality detection to ensure low packet loss rate at the expense of little link bandwidth. This helps improve data transmission for real-time services such as voice and video services over low-SLA links such as Internet links.

## Multi-service

The Cloudnet provides various business functions including cloud engineering survey, large-screen monitoring, PPSK, cloud authentication, hotel management, etc., which comprehensively shows the business capacity of Cloudnet in network deployment, network management, and customized services.

## Mobile service capability

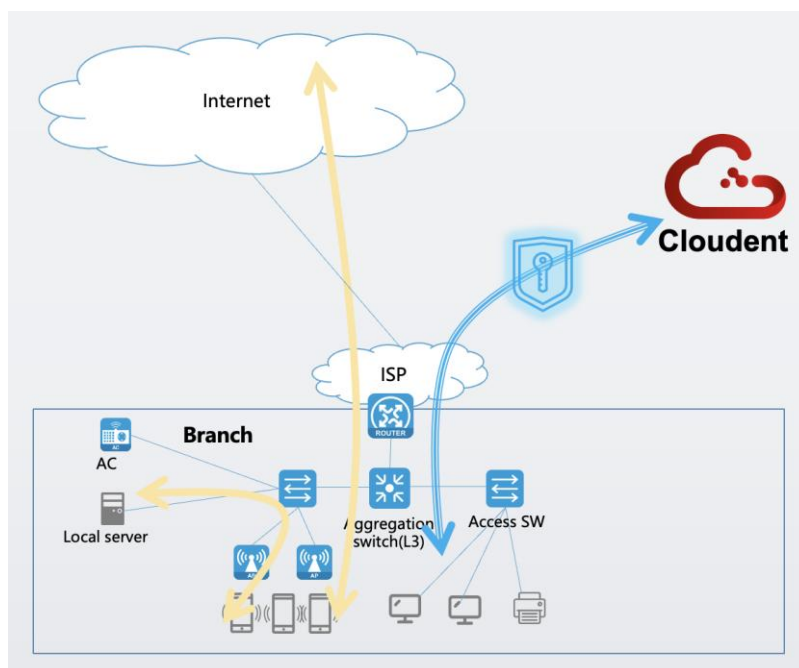
Cloudnet APP provides mobile operation and maintenance capabilities, and IT personnel can carry it with them and grasp the network operation status anytime and anywhere. When a network failure occurs, it can be monitored in real time and remotely processed in time, enabling zero distance operation and maintenance. The Cloudnet APP not only supports one-click diagnosis, real-time monitoring, and alarm push, but also can remotely perform common operations such as version upgrade, configuration backup, configuration restoration, and file management of related devices.

## Open API, application value-added, accelerate enterprise operation

Cloudnet provides a wealth of open interfaces such as passenger flow analysis, basic management, wireless services, authentication, O&M, and uses network data to empower customers to accelerate business value-added.

## Data Transmission Protection

All connections to Cloudnet are encrypted end-to-end using at least TLS 1.2. This includes client connections, local network devices, local termination connections, northbound interfaces, and administrator access to the management interface. Establish trustworthy SSO through Certified Authorization Center (CAS). Collaborate with the carrier solution to achieve single sign-on. This allows customers to enforce user requirements using standard identity verification and password policies. Then, Cloudnet central executes role-based management privileges for each user.



## Data Storage Protection

The tenant platform is hierarchically decentralized, and the information accessible to accounts of different roles (sub-accounts, main-accounts, operation, monitoring, maintenance, etc.) is locked to ensure that data does not exceed its permission scope. All operations can be traced back to the source and will be recorded as logs. This includes accounts, IP addresses, specific commands, sessions, saved changes, logins, and logouts. Send security reports via application programs.

Deploying firewalls in the cloud to conduct attack detection and response for inbound and outbound networks, and providing strong defense mechanisms against various flood attacks and individual data packet attacks in the network. Deploy intrusion detection and prevention systems (IDPS), Deploy denial of service attack prevention (DoS), Deploy forensic tools and conduct penetration testing regularly.

All persistent data is encrypted using AES-256 at minimum, key information such as user accounts and passwords, Irreversible Processing should also be done besides encrypting by AES.

## Advanced Architecture design

The Cloudnet platform adopts an advanced full-containerization solution and a fully distributed deployment architecture design. Based on which, the computing resources can be adaptively adjusted and allocated according to business characteristics, and achieve the flexible expansion and user-unaware business iterative.

## Ecosystem enablement

Supporting online developing capabilities for upper-layer app development and system collaboration and providing visible device management from the GUI, the platform supports end-to-end service deployment with low cost. H3C also provides a professional development lab to offer R&D-level support to business partners and customers.

## Technical specifications

Features	Description
Deployment mode	Public cloud through virtualization platform
Multi-user management	Role-based access control
Manageable number of APs	Unlimited
Authentication	Facebook authentication WeChat authentication Account authentication One-key authentication PPSK authentication Guest authentication Dumb terminal authentication

Features	Description
O&M	<p>Intelligent operation and maintenance escort the customer network</p> <p>Network health monitoring</p> <p>Client connection snapshot</p> <p>Problem location and analysis</p> <p>Wireless network optimization</p> <p>One-click diagnosis and optimization</p> <p>VIP policy for AP and Client</p> <p>WIPS</p> <p>Client access analysis</p>
Network management	<p>Hierarchical and decentralized management</p> <p>Full network monitoring</p> <p>Sites management</p> <p>Devices management (including switches, routers, ac, cloud ap, firewall)</p> <p>Client management</p> <p>Alarm management</p> <p>Operation logs</p> <p>System messages</p> <p>Comprehensive reports</p> <p>Sub-accounts management</p>
Multi-service	<p>PPSK (provides PPSK-based wireless access for small and medium-sized enterprises)</p> <p>Hotel Management (Allows room-based network management)</p> <p>Cloud engineering survey (provides one-stop high-efficiency engineering investigation for WLANs)</p> <p>Custom Dashboard (Displays followed monitoring statistics on a dashboard)</p> <p>Assets (Asset management information of equipment and terminal)</p>
SD-WAN	<p>Branch Topology</p> <p>Plan Device Onboard</p> <p>Plan Branch Networks</p> <p>Configure App TE</p> <p>Physical &amp; Virtual &amp; Tenant Network</p> <p>Application Policy</p> <p>Value-added Service</p> <p>QoS Manager</p> <p>Route Policy Manager</p>

Features	Description
Mobile APP	Mobile network management and monitoring Mobile devices operations Mobile MSP service Mobile network tools Mobile WLAN settings Mobile O&M
Open API	Support open and rich APIs, share business data with customers, and realize rapid business value-added
Technologies	The platform integrates a variety of advanced technologies including cloud computing, big data , AI, etc.
Ecosystem enablement	Support of full network standards, system collaboration, and app development Support Google Map



New H3C Technologies Co., Limited  
 Beijing Headquarters  
 Tower 1, LSH Center, 8 Guangshun South Street, Chaoyang  
 District, Beijing, China  
 Zip: 100102  
 Hangzhou Headquarters  
 No.466 Changhe Road, Binjiang District, Hangzhou, Zhejiang,  
 China Zip: 310052  
 Tel: +86-571-86760000  
 Fax: +86-571-86760001

Copyright ©2025 New H3C Technologies Co., Limited  
 Reserves all rights Disclaimer: Though H3C strives to  
 provide accurate information in this document, we  
 cannot guarantee that details do not contain any  
 technical error or printing error. Therefore, H3C cannot  
 accept responsibility for any inaccuracy in this  
 document. H3C reserves the right for the modification  
 of the contents herein without prior notification.

<https://www.h3c.com>